

HYDRO-PNEUMATIC PRESSES : HP-Series



NEW PRODUCT RELEASE-2009!!!!

Features Include:
Adjustable Output
Standard Pressure indicator
Optional digital readout
Force monitoring package
Fully contained - no fluid reservoirs
or hydraulic lines
Rapid advance with
Automatic power stroke

Options Include:
Force Monitoring/Control
Speed Control
Dwell Timers
End of stroke sensing

- FAST-ACTING RAPID ADVANCE
- STANDARD 1/2" POWER STROKE
- LOW AIR CONSUMPTION
- VERY LOW MAINTENANCE
- CLEAN - QUIET - COMPACT
- CUSTOM SIZES AVAILABLE

HP-4 - 4 Ton
HP-8 - 8 Ton
HP-16 - 16 Ton

Benchtop or
Floor/Mobile Stations

Standard Dimensions:
8" open height
4" total stroke
1/2" Power Stroke
8"x10" bolster
CUSTOMIZABLE

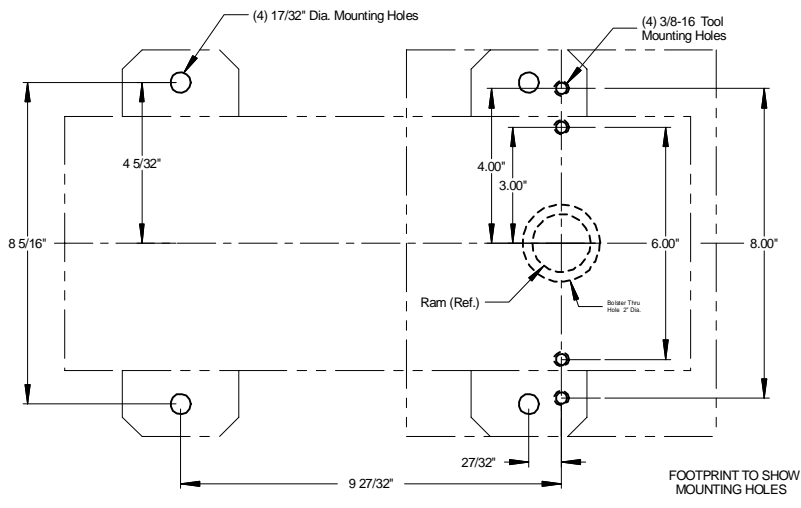
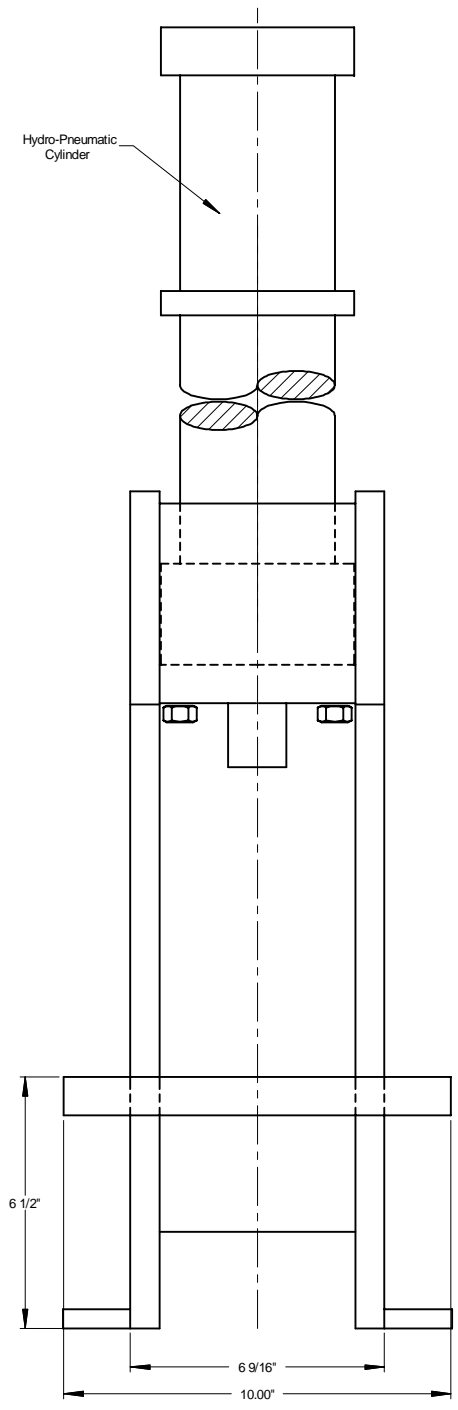
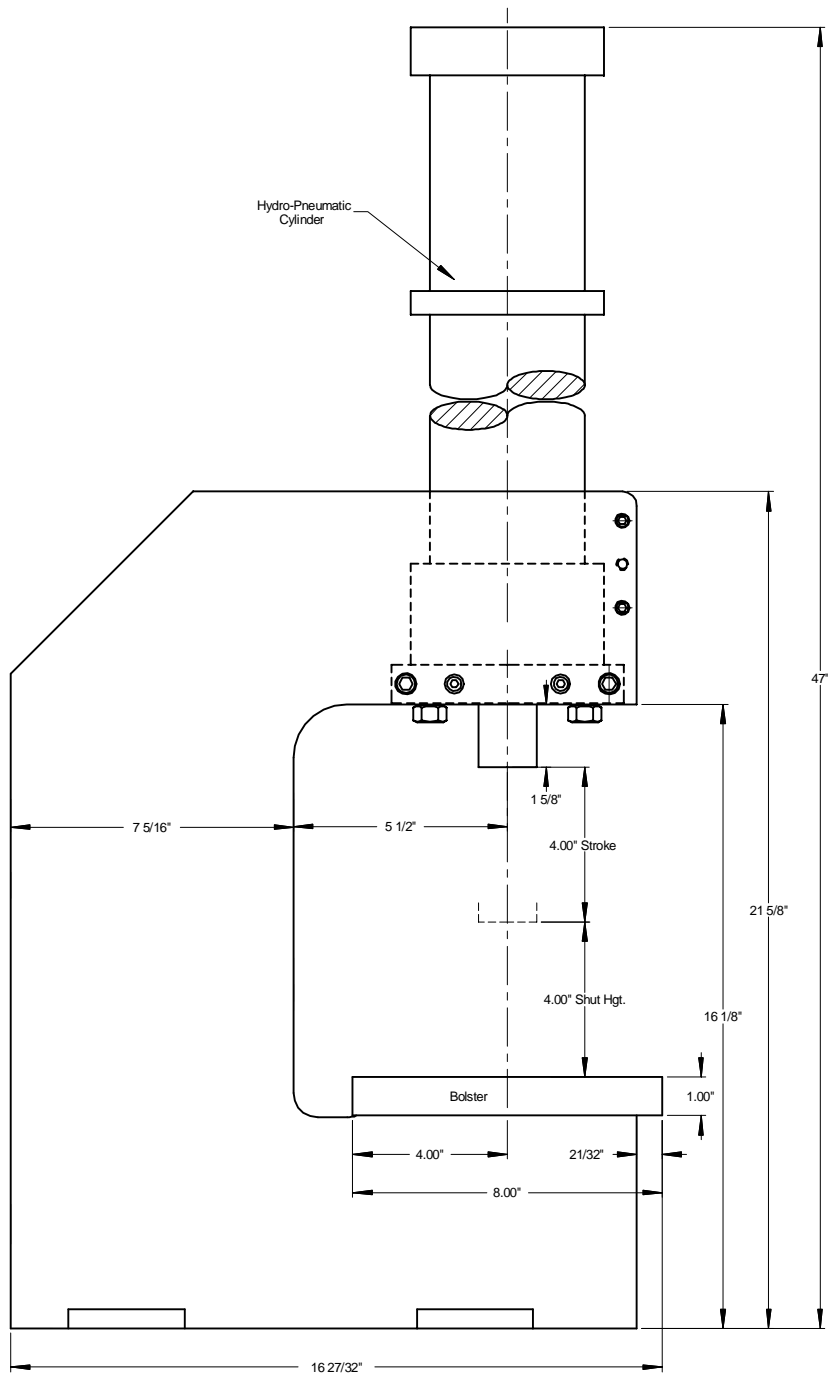
Manual
or Automatic

Ideal for
Riveting, staking, clinching, marking,
coining, stamping, pressing, bending,
part insertion, piercing, etc.

Automotive • Aerospace • Electronics • Medical • Industrial

Contact Sales: 1-888-889-4287
www.Joraco.com sales@Joraco.com

AIM JORACO



**AIM-JORACO
HYDRO-PNEUMATIC PRESS
8-TON VERSION**